

Technical Description

Doeka Burst Testing Machine
Type: DBT

We automate your Success!

Page 1 of 3



DBT- 4 chambers

Basic machine description:

The DBT machine is ISO4074 standard burst testing machine.

Introduction:

This machine is used for the determination of bursting pressure and volume of a condom according to the ISO4074.

The Burst Testing machine is modular and can be operated with 2, 4, 6 or 8 chambers simultaneously.

One of the main advantages of the DOEKA Burst Testing is that the machine is designed for 8 condoms can be loaded at one time. This saves a lot of time and workforce.

Technical Description



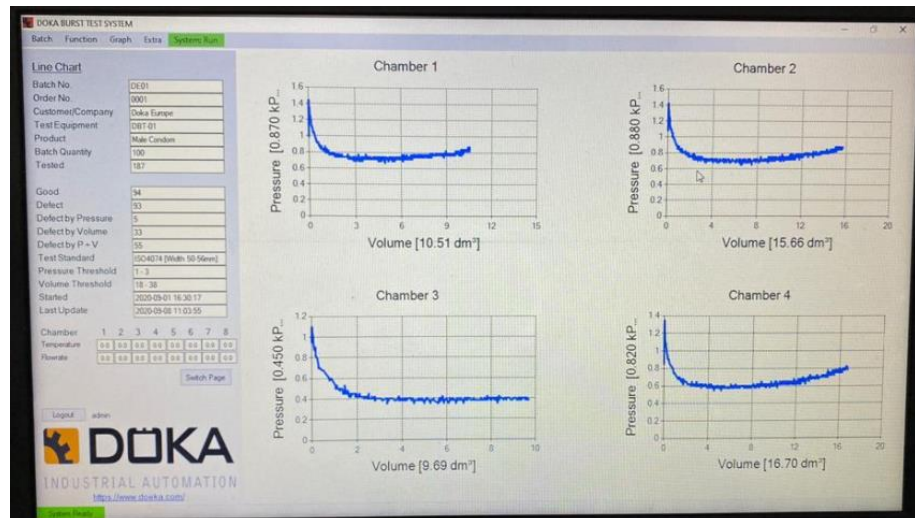
Doeka Burst Testing Machine
Type: DBT

We automate your Success!

Page 2 of 3

At the beginning all test heads are inside the main chamber, where they can get loaded. After starting the bursting process, the test heads are moving to their destined chamber and start inflating.

Another advantage is the flexibility of the DOEKA Burst Testing. The data can be transferred wireless or LAN which is an important step towards the future Industry 4.0.



Doeka Dedicated Window based Software

Technical Description



Doeka Burst Testing Machine
Type: DBT

We automate your Success!

Page 3 of 3

Technical Data (for 4 chambers)

- Overall size for DBT: approx.2725mm (L) x 1560mm (H) x 902mm (W)
- Pneumatic Supply: Minimum 6 Bar (approx.. 30l/min each chamber)
- Electricity supply: Single phase 230V 50Hz.
(depend on machine execution)
- Weight (4 chambers): approx. 550kg
- Software: Window 10 based PC / Laptop

For further information please contact us at:
commercial@doeka.com or visit us at www.doeka.com